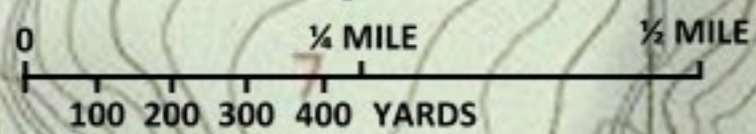




Upper Snoqualmie Valley  
Elk Management Group

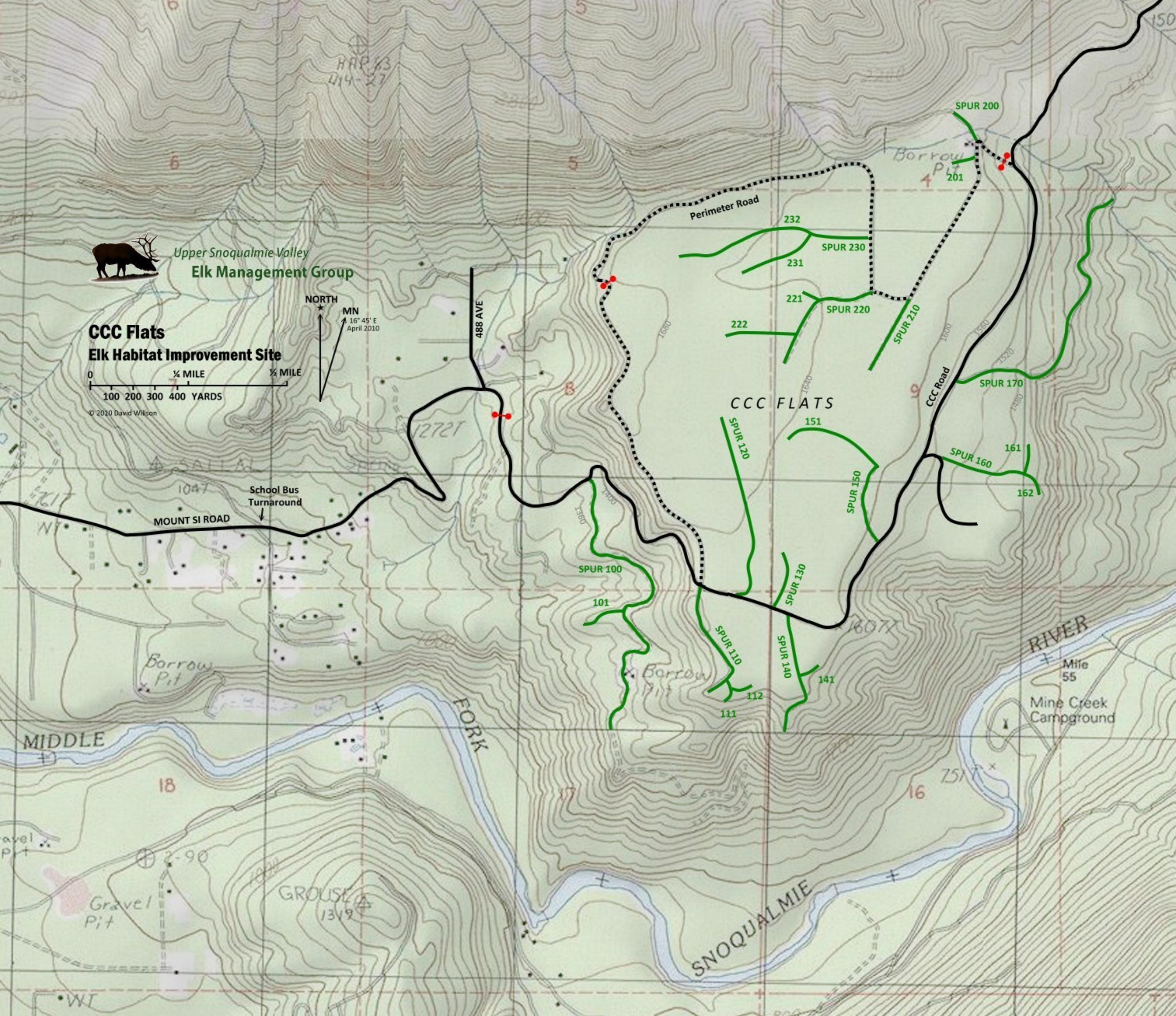
**CCC Flats  
Elk Habitat Improvement Site**



© 2010 David Willson

NORTH

MN  
16° 45' E  
April 2010



School Bus Turnaround  
MOUNT SI ROAD

488 AVE

Perimeter Road

Borrow Pit 201

CCC FLATS

CCC Road

MINE CREEK RIVER  
Mile 55  
Mine Creek Campground

MIDDLE

FORK

SNOQUALMIE

GROUSE  
1319

Gravel Pit

2-90

HAP 63  
014-27

12721

1047

1047

18

16

16077

Borrow Pit

SPUR 100

101

SPUR 110

111

112

SPUR 130

SPUR 140

141

SPUR 120

151

SPUR 150

SPUR 160

161

162

222

221

231

232

SPUR 220

SPUR 230

SPUR 210

SPUR 200

150